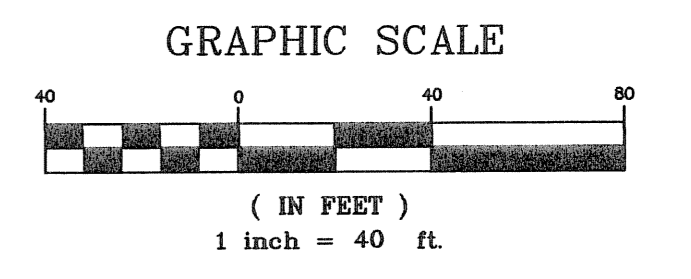
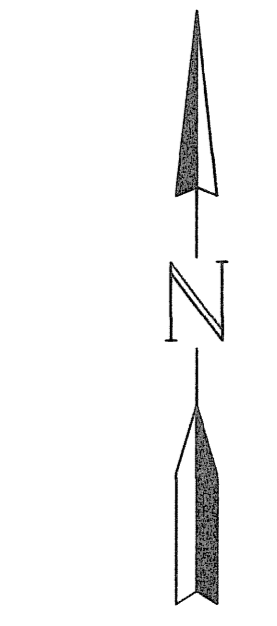
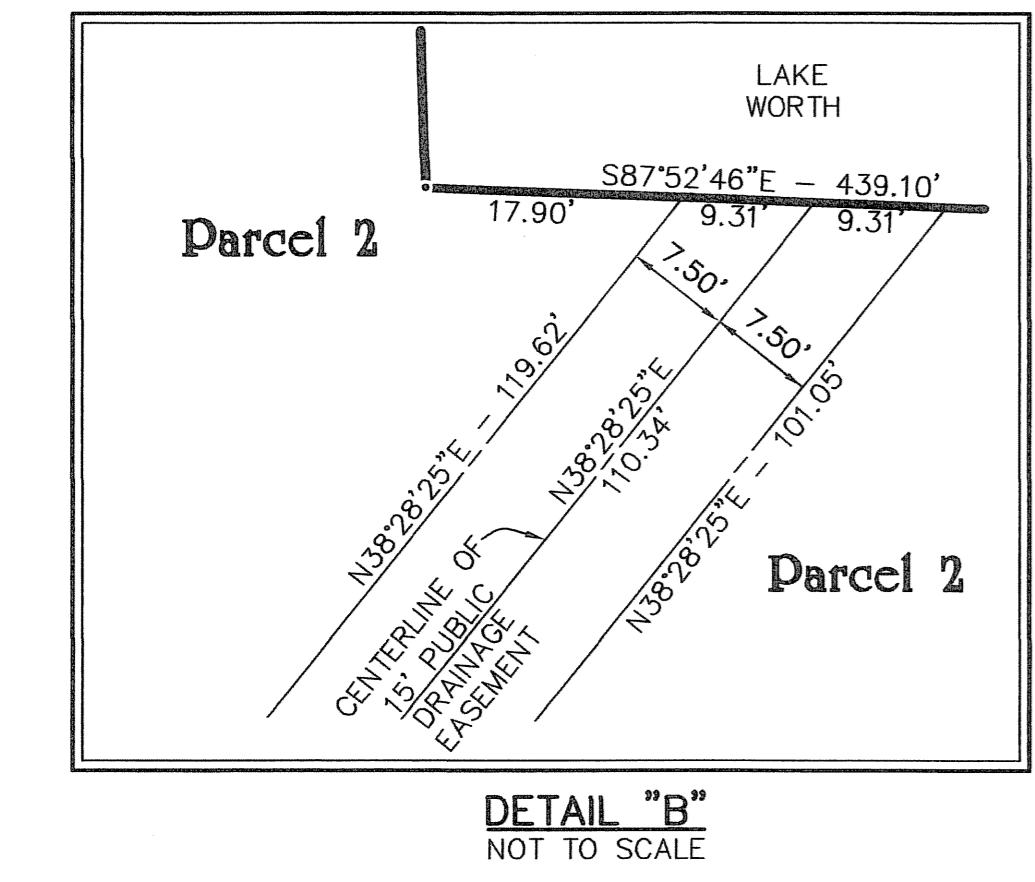
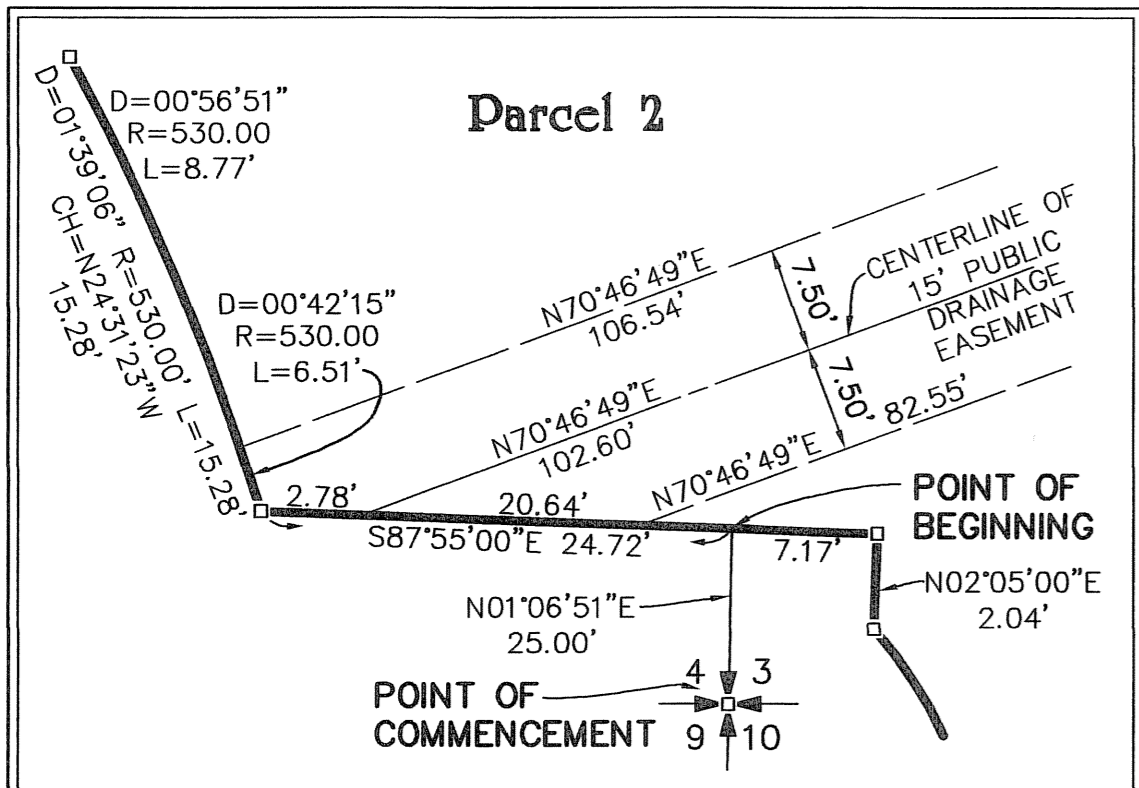
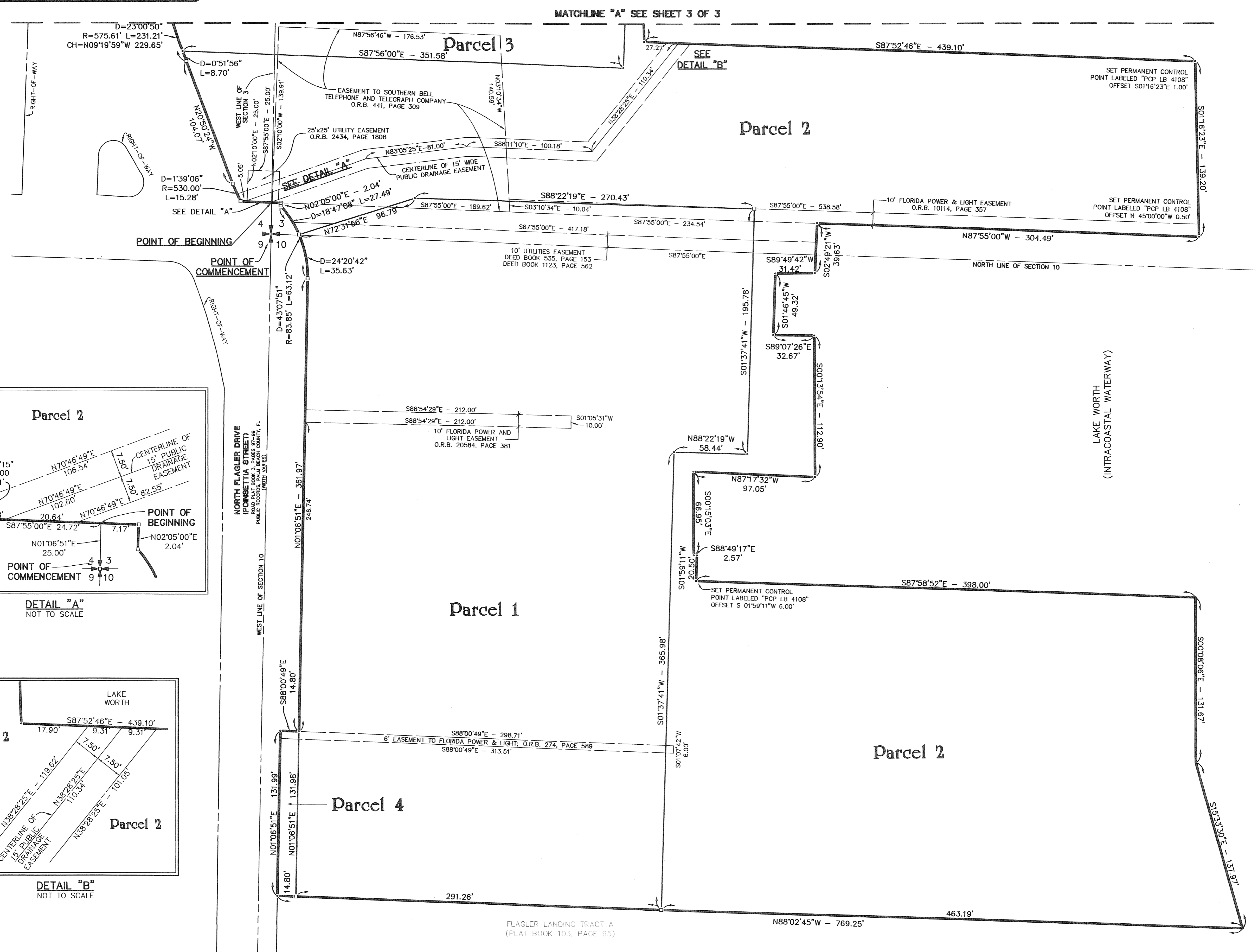
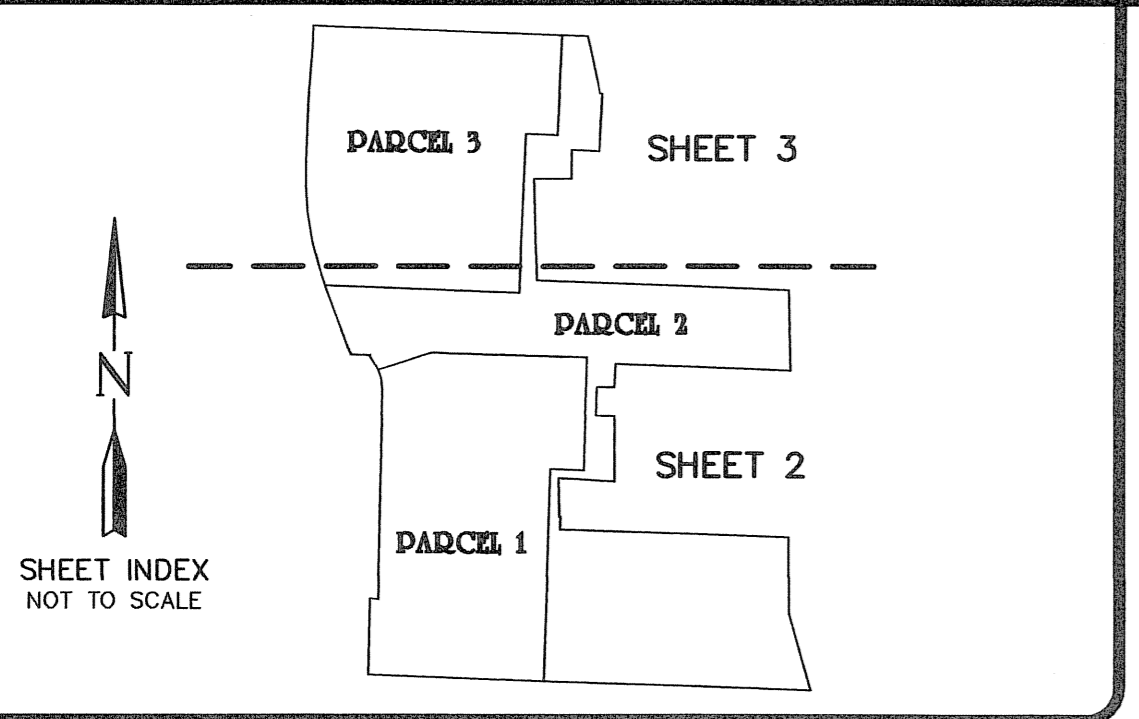


# RYBOVICH PLAT

A REPLAT OF A PORTION OF LOTS 1, 3, 5, AND 7, GALE LAKE WORTH PLAT NO. 1 (PLAT BOOK 3, PAGE 9, PALM BEACH COUNTY RECORDS) AND PORTIONS OF LOTS 28 THROUGH 43, AND LOT "C", BLOCK 2, NORTH PALM BEACH PLAT NO. 1 (PLAT BOOK 6, PAGE 30, PALM BEACH COUNTY RECORDS) TOGETHER WITH SUBMERGED LANDS ADJACENT THERETO, ALL LYING IN SECTIONS 3, 4, AND 10, TOWNSHIP 43 SOUTH, RANGE 43 EAST, CITY OF WEST PALM BEACH, PALM BEACH COUNTY, FLORIDA  
 JULY 2006

STATE OF FLORIDA  
 COUNTY OF PALM BEACH  
 This plat was filed for record at \_\_\_\_\_ M, this \_\_\_\_\_ day of \_\_\_\_\_, 2006 and duly recorded in Plat Book No. \_\_\_\_\_, on Pages \_\_\_\_\_ to \_\_\_\_\_.  
 Sharon R. Bock, Clerk & Comptroller  
 By: \_\_\_\_\_ DC



**LEGEND**

- = SET PERMANENT REFERENCE MONUMENT LABELED "GCY INC. LB 4108 PRM"
- = SET PERMANENT CONTROL POINT LABELED "PCP LB 4108"
- D = DELTA ANGLE
- L = ARC LENGTH
- R = CURVE RADIUS
- CH = CHORD BEARING AND DISTANCE
- O.R.B. = OFFICIAL RECORD BOOK

GCY JOB NO. 04-1137-04-01

**GCY**  
 INCORPORATED  
 PROFESSIONAL SURVEYORS AND MAPPERS  
 CERTIFICATE OF AUTHORIZATION LB 4108

CORPORATE OFFICE: 1469 • 1505 SW MARTIN HWY. • TALLAHASSEE, FL 32303  
 (800) 386-1066

TALLAHASSEE OFFICE: 1990 COMMONWEALTH LANE  
 TALLAHASSEE, FL 32303  
 (850) 536-8455